



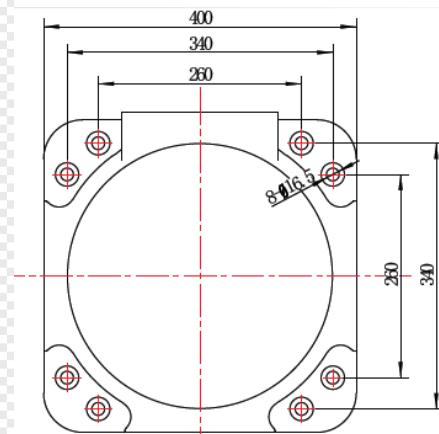
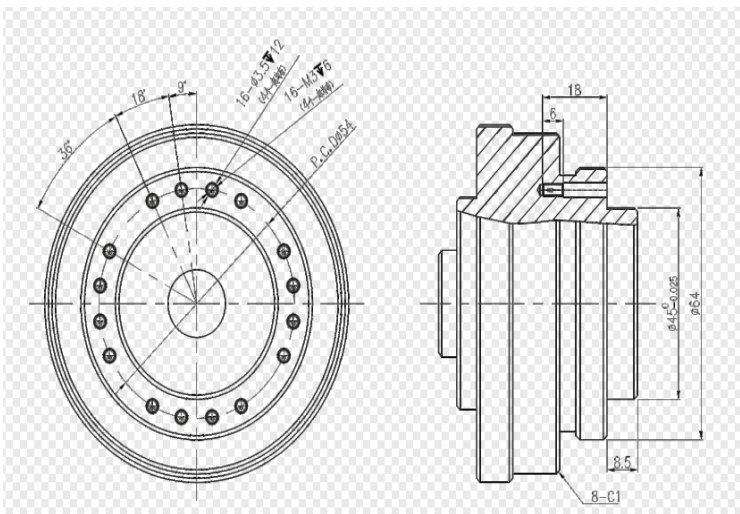
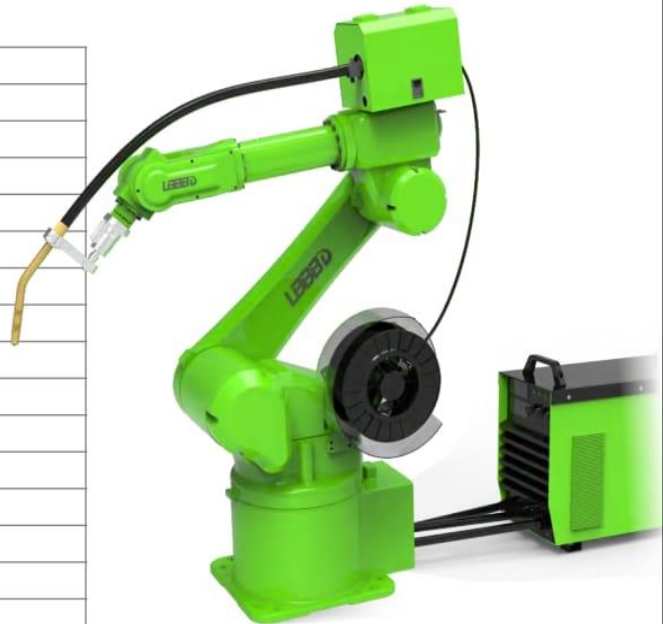
CC ROBOTICS ESP

Catalogo ESP CC Robotics

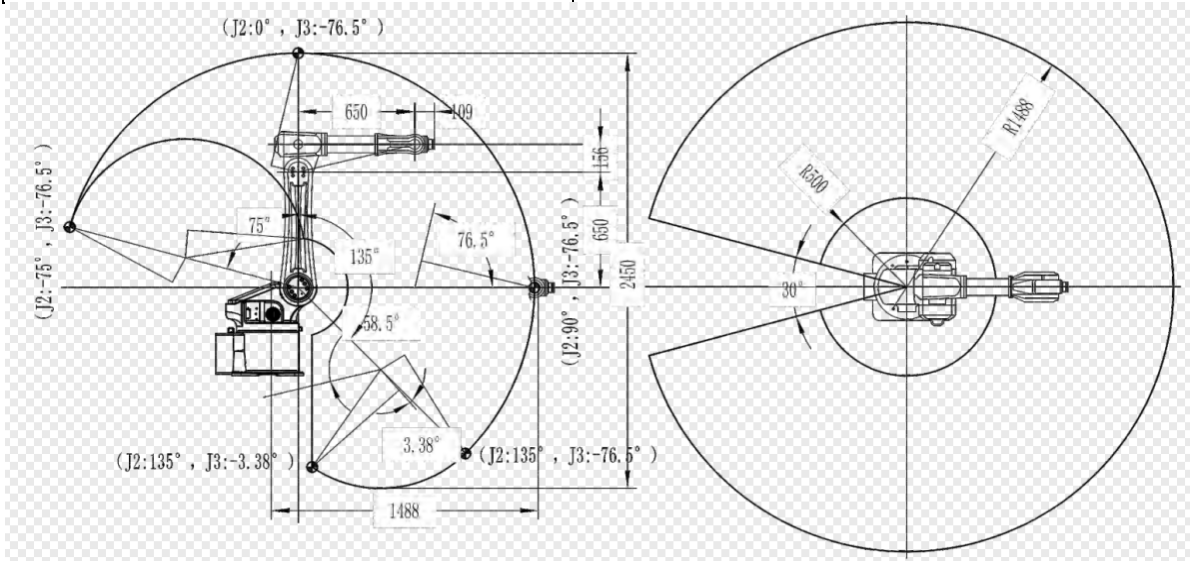
LH Welding Series Robots (Dust-proof)

LH1500-C-6

Payload	10KG	
Reach	1500mm	
Structure	Articulated	
Number of axes	6	
Repeatability	±0.03mm	
Max. motion range	Axis 1	±165°
	Axis 2	+60°/-50°
	Axis 3	+60°/-80°
	Axis 4	±178°
	Axis 5	+30°/-220°
	Axis 6	±360°
Max. speed	Axis 1	148°/sec
	Axis 2	148°/sec
	Axis 3	148°/sec
	Axis 4	222°/sec
	Axis 5	222°/sec
	Axis 6	360°/sec
Weight	≈150kg	
Mounting type	Ground, bracket, ceiling	
Ambient temperature	5°C ~ 45°C	



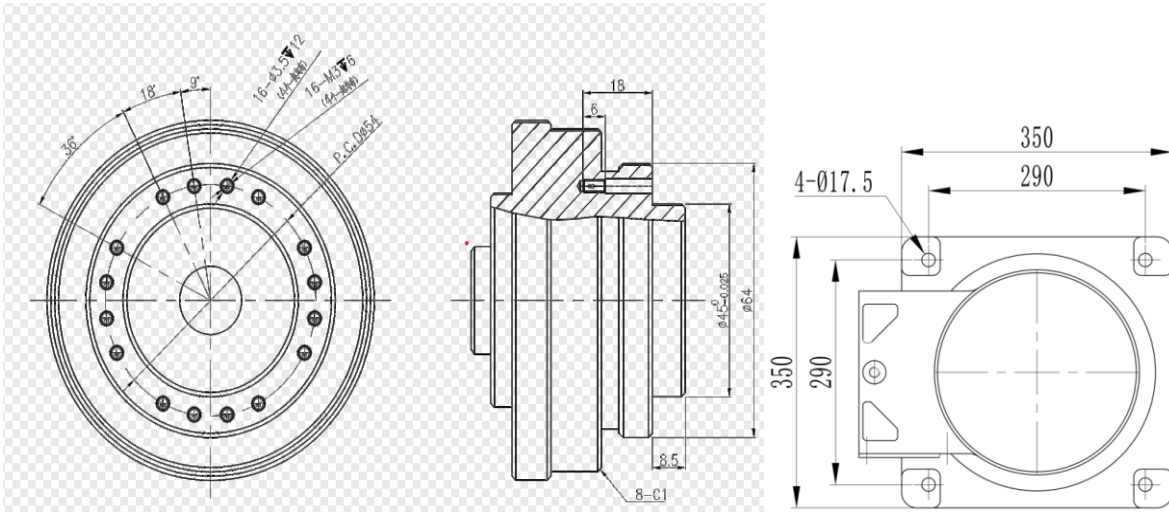
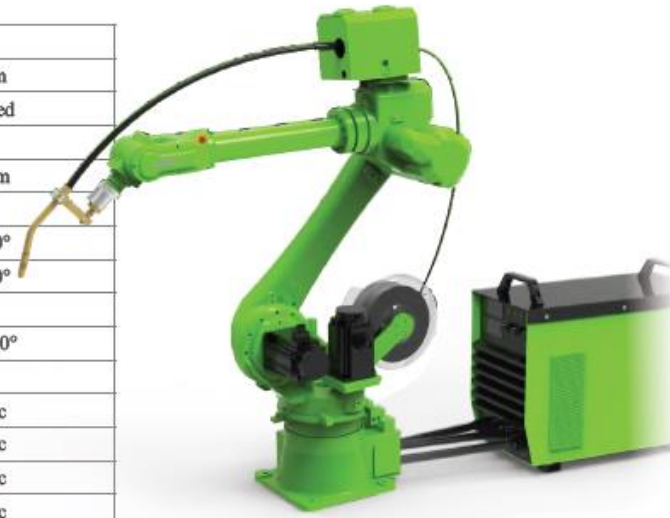
Carga útil	10 KG	
Alcance	1500mm	
Estructura	Articulada	
Número de ejes	6	
Repetibilidad	±0.03mm	
Rango de movimiento max	Eje 1	±165°
	Eje 2	+60°/-50°
	Eje 3	+60°/-80°
	Eje 4	±178°
	Eje 5	+30°/-220°
	Eje 6	±360°
Velocidad máxima	Eje 1	148°/sec
	Eje 2	148°/sec
	Eje 3	148°/sec
	Eje 4	222°/sec
	Eje 5	222°/sec
	Eje 6	360°/sec
Peso	≈150Kg	
Tipo de montaje	Suelo, Soporte, Techo	
Temperatura ambiente	5°C~45°C	



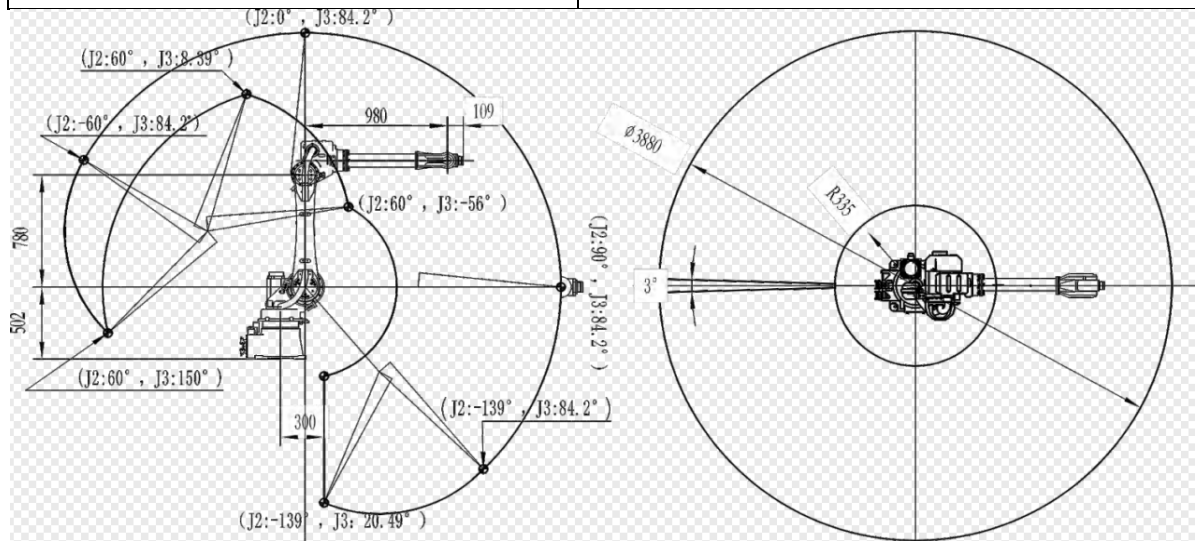
LH Welding Series Robots

LH2100-C-6

Payload	10KG	
Reach	2100mm	
Structure	Articulated	
Number of axes	6	
Repeatability	±0.03mm	
Max. motion range	Axis 1	±165°
	Axis 2	+60°/-60°
	Axis 3	+70°/-80°
	Axis 4	±178°
	Axis 5	+30°/-220°
	Axis 6	±360°
Max. speed	Axis 1	148°/sec
	Axis 2	148°/sec
	Axis 3	148°/sec
	Axis 4	222°/sec
	Axis 5	222°/sec
	Axis 6	360°/sec
Weight	≈235kg	
Mounting type	Ground, bracket, ceiling	
Ambient temperature	5°C ~ 45°C	



Carga útil	10 KG	
Alcance	2100mm	
Estructura	Articulada	
Número de ejes	6	
Repetibilidad	±0.03mm	
Rango de movimiento max	Eje 1	±165°
	Eje 2	+60°/-60°
	Eje 3	+70°/-80°
	Eje 4	±178°
	Eje 5	+30°/-220°
	Eje 6	±360°
Velocidad máxima	Eje 1	148°/sec
	Eje 2	148°/sec
	Eje 3	148°/sec
	Eje 4	222°/sec
	Eje 5	222°/sec
	Eje 6	360°/sec
Peso	≈235Kg	
Tipo de montaje	Suelo, Soporte, Techo	
Temperatura ambiente	5°C~45°C	



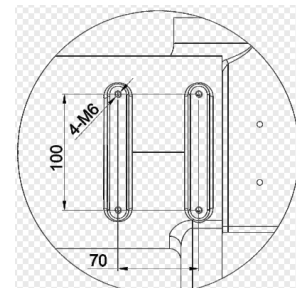
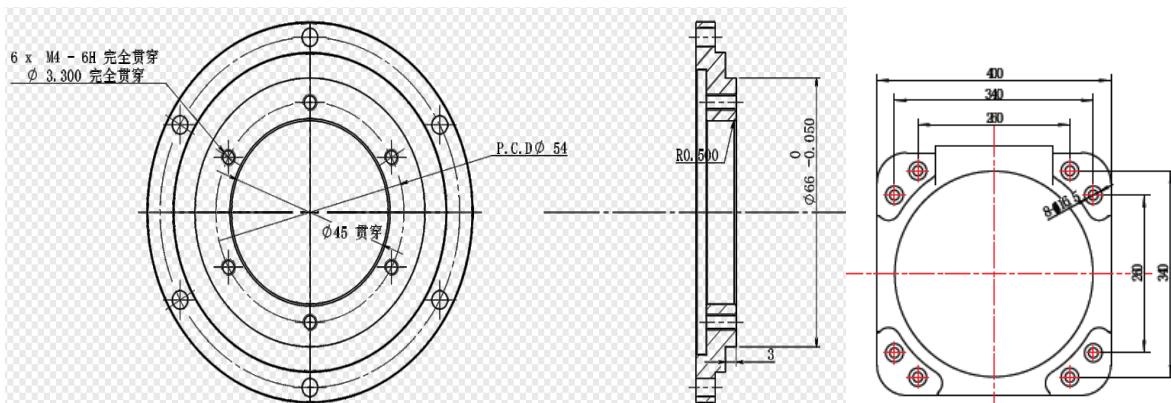
LH Welding Series Robots (Hollow)

LHZ1450-C-6

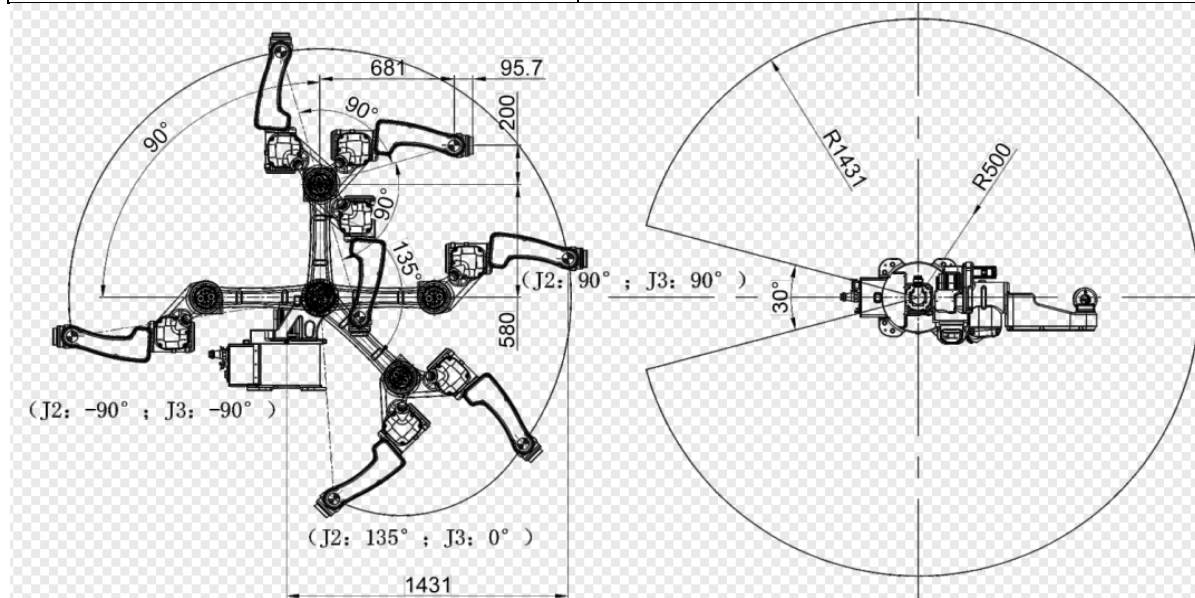
Payload	10KG	
Reach	1450mm	
Structure	Articulated	
Number of axes	6	
Repeatability	±0.03mm	
Max. motion range	Axis 1	±165°
	Axis 2	+88°/-80°
	Axis 3	+85°/-85°
	Axis 4	±178°
	Axis 5	+30°/-210°
	Axis 6	±360°
Max. speed	Axis 1	148°/sec
	Axis 2	148°/sec
	Axis 3	148°/sec
	Axis 4	222°/sec
	Axis 5	222°/sec
	Axis 6	360°/sec
Weight	≈150kg	
Mounting type	Ground, bracket, ceiling	
Ambient temperature	5°C ~ 45°C	



Main Applications



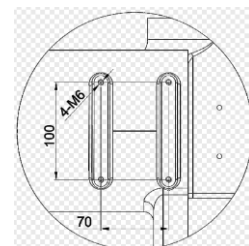
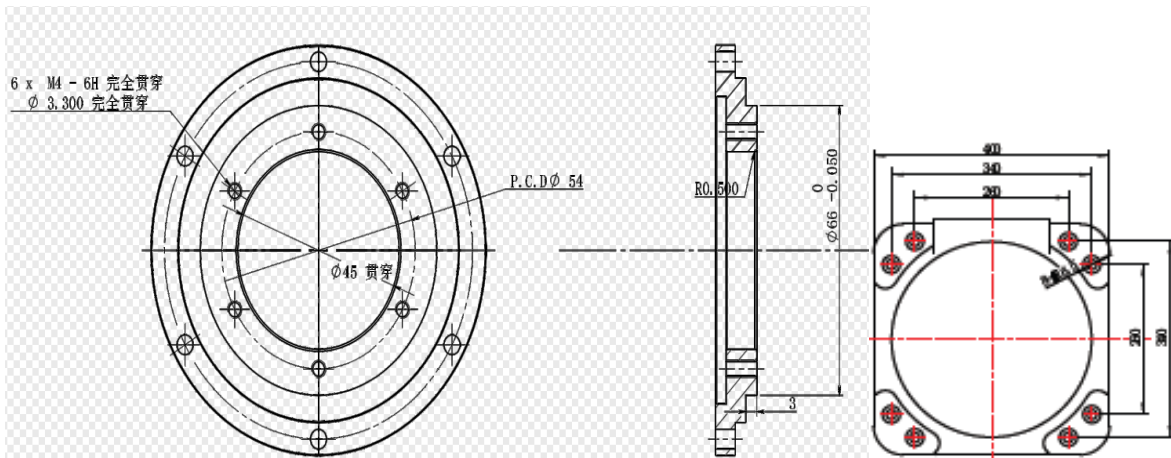
Carga útil	10 KG	
Alcance	1450mm	
Estructura	Articulada	
Número de ejes	6	
Repetibilidad	±0.03mm	
Rango de movimiento max	Eje 1	±165°
	Eje 2	+88°/-80°
	Eje 3	+85°/-85°
	Eje 4	±178°
	Eje 5	+30°/-210°
	Eje 6	±360°
Velocidad máxima	Eje 1	148°/sec
	Eje 2	148°/sec
	Eje 3	148°/sec
	Eje 4	222°/sec
	Eje 5	222°/sec
	Eje 6	360°/sec
Peso	≈150Kg	
Tipo de montaje	Suelo, Soporte, Techo	
Temperatura ambiente	5°C~45°C	



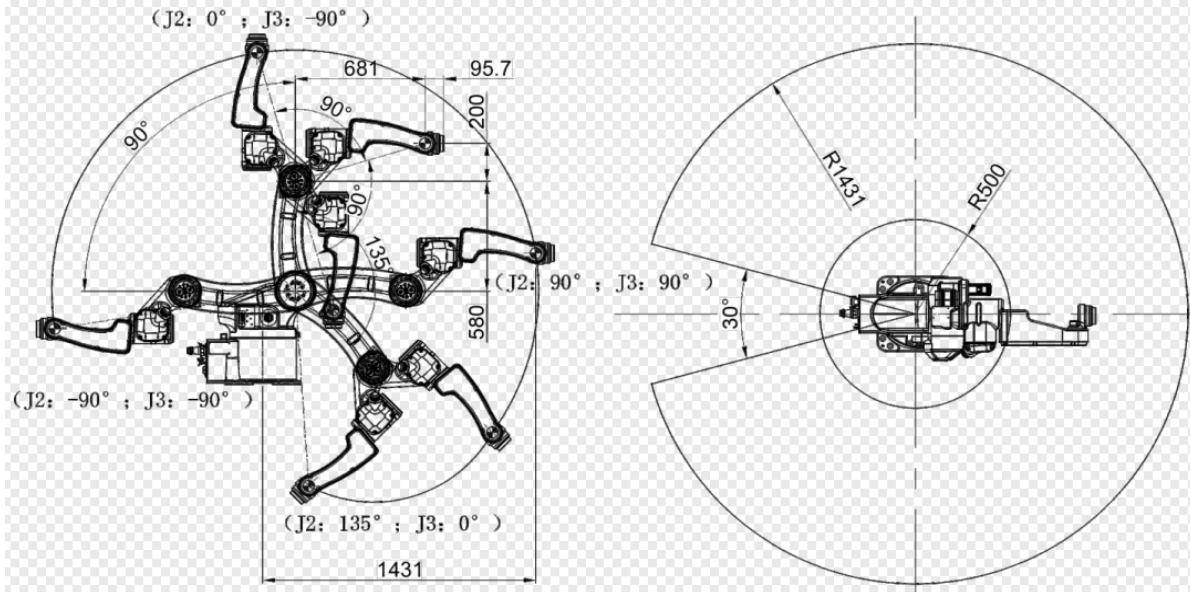
LH Welding Series Robots (Hollow)

LHZ1500-C-6

Payload		10KG
Reach		1500mm
Structure		Articulated
Number of axes		6
Repeatability		±0.03mm
Max. motion range	Axis 1	±165°
	Axis 2	+88°/-60°
	Axis 3	+85°/-85°
	Axis 4	±178°
	Axis 5	+30°/-210°
	Axis 6	±360°
Max. speed	Axis 1	148°/sec
	Axis 2	148°/sec
	Axis 3	148°/sec
	Axis 4	222°/sec
	Axis 5	222°/sec
	Axis 6	360°/sec
Weight		≈150kg
Mounting type		Ground, bracket, ceiling
Ambient temperature		5°C ~ 45°C



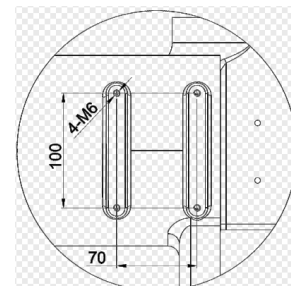
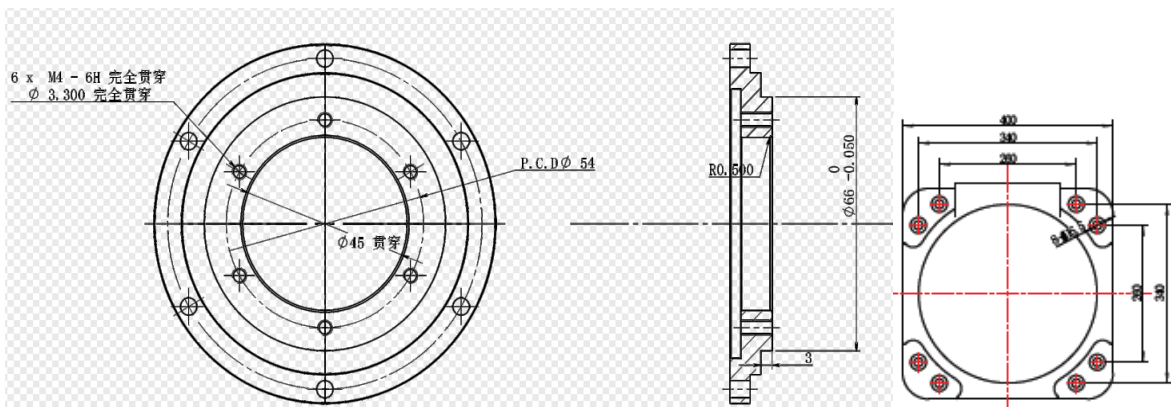
Carga útil	10 KG	
Alcance	1500mm	
Estructura	Articulada	
Número de ejes	6	
Repetibilidad	±0.03mm	
Rango de movimiento max	Eje 1	±165°
	Eje 2	+88°/-60°
	Eje 3	+85°/-85°
	Eje 4	±178°
	Eje 5	+30°/-210°
	Eje 6	±360°
Velocidad máxima	Eje 1	148°/sec
	Eje 2	148°/sec
	Eje 3	148°/sec
	Eje 4	222°/sec
	Eje 5	222°/sec
	Eje 6	360°/sec
Peso	≈150Kg	
Tipo de montaje	Suelo, Soporte, Techo	
Temperatura ambiente	5°C~45°C	



LH Welding Series Robots (Hollow)

LHZ2000-C-6

Payload	10KG	
Reach	2000mm	
Structure	Articulated	
Number of axes	6	
Repeatability	±0.03mm	
Max. motion range	Axis 1	±165°
	Axis 2	+88°/-45°
	Axis 3	+60°/-80°
	Axis 4	±178°
	Axis 5	+30°/-200°
	Axis 6	±360°
Max. speed	Axis 1	148°/sec
	Axis 2	148°/sec
	Axis 3	148°/sec
	Axis 4	222°/sec
	Axis 5	222°/sec
	Axis 6	360°/sec
Weight	≈170kg	
Mounting type	Ground, bracket, ceiling	
Ambient temperature	5°C ~ 45°C	



Carga útil	10 KG	
Alcance	2000mm	
Estructura	Articulada	
Número de ejes	6	
Repetibilidad	±0.03mm	
Rango de movimiento max	Eje 1	±165°
	Eje 2	+88°/-45°
	Eje 3	+60°/-80°
	Eje 4	±178°
	Eje 5	+30°/-200°
	Eje 6	±360°
Velocidad máxima	Eje 1	148°/sec
	Eje 2	148°/sec
	Eje 3	148°/sec
	Eje 4	222°/sec
	Eje 5	222°/sec
	Eje 6	360°/sec
Peso	≈170Kg	
Tipo de montaje	Suelo, Soporte, Techo	
Temperatura ambiente	5°C~45°C	

